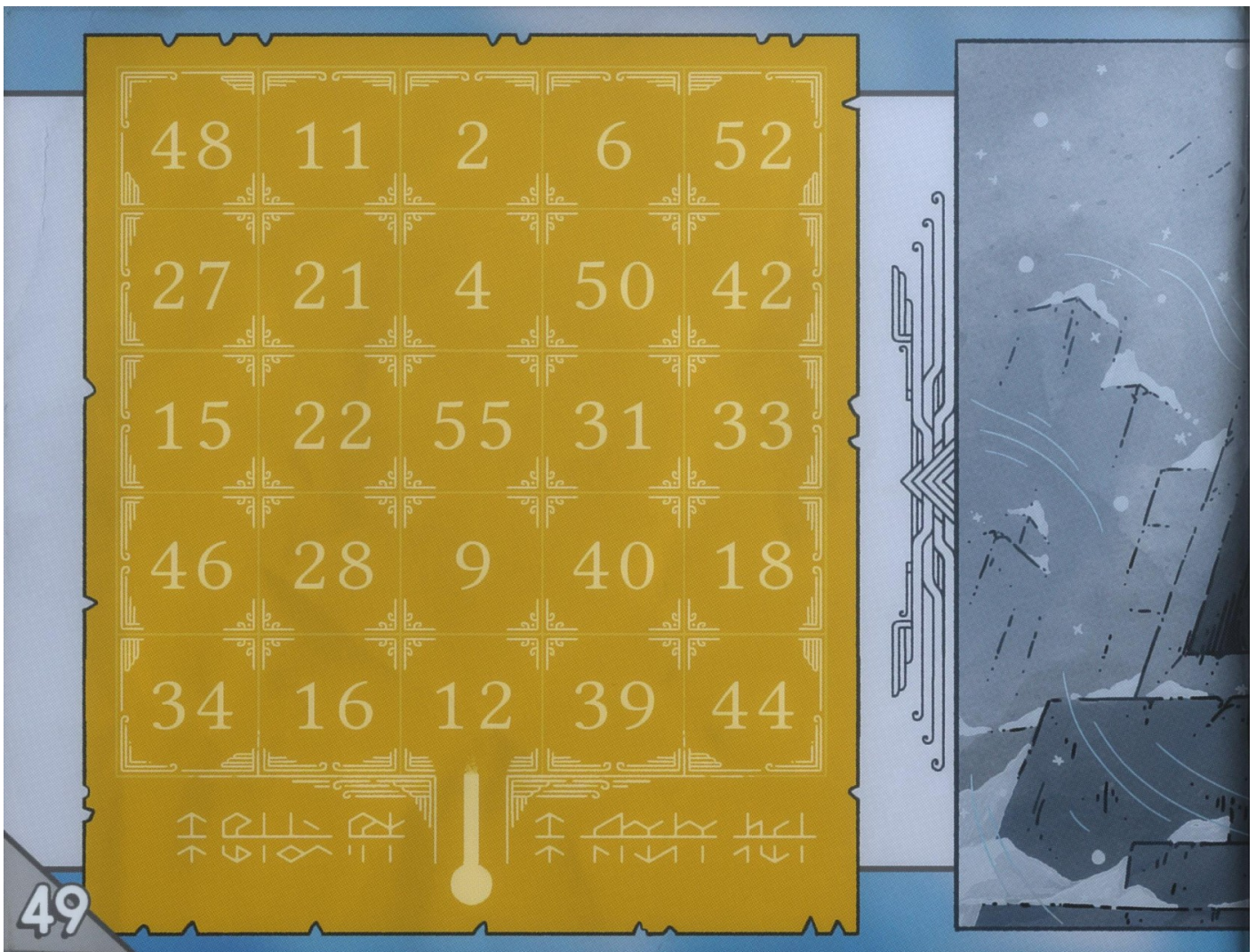


The Golden Path

The Golden Path is a puzzle in *Tunic*. It is referred to as "the greatest spell" by [page 49](#) of the [instruction manual](#) and "the greatest song" by [page 54](#). Solving The Golden Path unlocks the [Mountain Door](#). Knowledge of it is required to solve the [Glyph Tower puzzle](#).

Elaboration



Like hinted by [page 44](#), the template for The Golden Path is found on page 49 of the instruction manual, and it is inputted like a Holy Cross code.

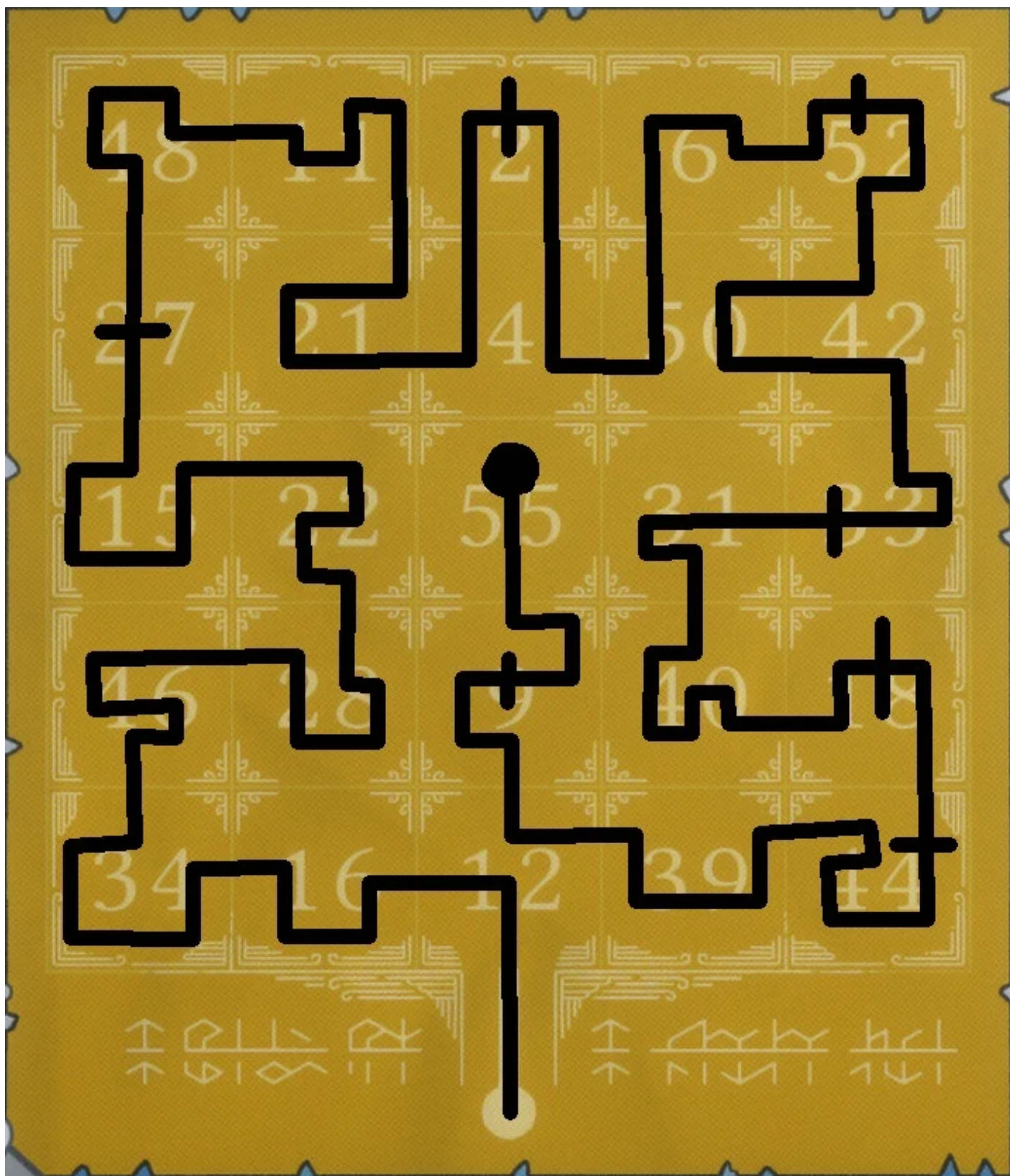
The template for The Golden Path is a 5x5 grid of numbers ranging anywhere from 2 to 55. The origin point for a Holy Cross code resides below the bottom-center square. As the instruction manual has 54 pages and a [front](#) and [back cover](#), the numbers are in reference to specific pages of the manual. Hidden within the 25 specified pages are fragments of The Golden Path.

48	11	2	6	52
27	21	4	50	42
15	22	55	31	33
46	28	9	40	18
34	16	12	39	44

When the fragments are placed upon the template via external means, it creates a cardinal pathway from the bottom origin point, going through each square, until it reaches the center end point.

Solution

Code:
ULDL ULDL URUR ULUR DRUL ULUR ULDL URUU LURD RDRU RDLD RURR DRUR DRUR RDLD LDRD
RDLL DRDL DRUR DRUR RDDDL URUL DLUL ULUR RULU



Revision #9

Created 11 February 2025 21:37:01 by HyliaAngel

Updated 26 February 2025 00:54:50 by HyliaAngel