

# Overworld



Connections	<div><a href="#">East Forest</a></div> <div><a href="#">Under the Well</a></div> <div><a href="#">Dark Tomb</a></div> <div><a href="#">West Garden</a></div> <div><a href="#">Eastern Vault</a></div> <div><a href="#">Ruined Atoll</a></div> <div><a href="#">Mountain Door</a></div> <div><a href="#">Quarry</a></div> <div><a href="#">Swamp</a></div> <div><a href="#">The Far Shore</a></div> <div><a href="#">Shop</a></div>
-------------	--

The **Overworld** is the main hub area of *Tunic*. The player washes onto the south shore, Ruin Seeker's Arrival, at the start of the adventure. This area notably contains the Sealed Temple, the Old House, and the West Belltower. The Spectral Seller is found within the windmill, and inside of the giant skull structure to the east.

## Map



# Enemies

## Day

- Blob (pink)
- Blob (blue)
- Blob (blue big)
- Rudeling (red)
- Rudeling (blue)
- Rudeling (purple)
- Hedgehog (pink)
- Hedgehog (blue)
- Autobolt
- Envoy
- Phrend

## Night

- none

# Items

## Treasure Chests

There are 60-61 treasure chests in the Overworld, 60 if the Stick was alternatively collected from the East Forest.

Item	Chest ID #
Stick x1	19
Effigy x1	90
25 gems	15
48 gems	255
30 gems	214
Blue Fruit x3	6
Magic Potion Shard x1	8
15 gems	1
Explosive Bomb x2	11
Hot Pepper x2	12
Flower x1	35
40 gems	36
Explosive Bomb x2	37
25 gems	91
Golden Coin x1	60
Explosive Bomb x4	285
Effigy x1	17
Ash x1	7
16 gems	273
25 gems	4
Lure x1	18
Lucky Cup x1	2
Hourglass x1	95

Item	Chest ID #
Ivy x3	208
255 gems	216
Golden Coin x1	10
1 gem	89
Tooth x1	207
Hot Pepper x2	9
Flower x1	16
20 gems	13
Effigy Statue x1	92
15 gems	14
Blue Fruit x1	3
Magic Potion Shard x1	266
Inverted Ash x1	245
20 gems	209
Golden Coin x1	267
Blue Fruit x3	272
Fire Sword x1	271
50 gems	270
32 gems	258
Fairy Soul #1	-
Fairy Soul #2	-
Fairy Soul #3	-
Fairy Soul #4	-
Fairy Soul #5	-
Fairy Soul #6	-
Fairy Soul #10	-
Fairy Soul #11	-
Fairy Soul #12	-
Fairy Soul #13	-
Fairy Soul #14	-
Fairy Soul #15	-

Item	Chest ID #
Fairy Soul #16	-
Secret Treasure #1 x1	1001
Secret Treasure #3 x1	1003
Secret Treasure #4 x1	1004
Secret Treasure #7 x1	1007
Secret Treasure #8 x1	1008
Secret Treasure #9 x1	1013

## Not in Treasure Chests

There are 5 items and 14 manual sheets not in treasure chests in the Overworld.

Item
Key x1
Key (Old House) x1
Shield x1
Magic Wand x1
Lantern x1
Page 10 and 11
Page 28 and 29
Page 16 and 17
Page 32 and 33
Page 18 and 19
Page 24 and 25
Page 8 and 9
Page 22 and 23
Page 42 and 43
Page 44 and 45
Page 4 and 5
Page 48 and 49
Page 52 and 53
Page 54 and Back Cover

# Trunic Translations

## Location Subtitle

West Belltower:

- "The second bell the hero struck"

## Ghosts

Ghost by the house with the mailbox:

- "Hi... are you new?"
- "Where is your home?"

Ghost by the Sealed Temple doors:

- "Things are tense in there ... I think SOMETHING BAD happened."

Ghost prostrate on the Sealed Temple floor:

- "Alas, alas, alas! Should we have done a 4th KEY?"
- "No... they would have found that too..."

Ghost sitting next to the red key:

- "Someone took out the SIEGE ENGINE? Impossible!"

Ghost near the green key, looking at the rafters:

- "Who would do such a thing? Either a HERO or a FOOL ..."

Ghost sitting in a wooded area to the right of the first staircase:

- "Oh hi. I'm just taking a break."
- "Are you going to the SWAMP? You're brave..."

Ghost near the moonlight bridge to the Swamp:

- "Do you seek the CATHEDRAL? Remember that you are nothing but a GHOST."

Ghost looking inside of a well:

- "Well well well..."
- ". . ."

- ". . . sorry."

Ghost looking towards the West Garden:

- "I used to visit the GARDENS, but it's scary now..."

Ghost sitting next to the ruined shop:

- "I ran a store, once. People usually steal stuff though."

Ghost laying down to the left of the fountain:

- "I'm so tired..."
- "Z z z z z z z . . ."

Ghost above the fountain:

- "Have you found the HOLY CROSS?"

Ghost sitting down to the right of the fountain:

- "Trying out a new look?"

Ghost between the fountain and waterfall, looking at the Swamp:

- "The CATHEDRAL scares me, but I've heard there's an INCREDIBLE TREASURE."
- "It's called the HERO'S LAURELS."

Ghost looking at a broken statue of The Heir:

- "So big! Are they this big in person?"

Ghost looking towards the Ruined Atoll:

- "What happened... I feel sad when I look at it..."

Ghost sitting in the seaside ruins next to the West Garden:

- "Things are more beautiful when they are ruins."
- "Do you agree?"

Left ghost sitting in a room leading towards Under the Well exit:

- "There's a mouse in my house..."
- "... What should I do about it?"

Right ghost sitting in a room leading towards Under the Well exit:

- "Do they sound funny to you?"
- "Seems fine to me."

Ghost inside of the windmill:

- "Have you heard the old hymn?"
- "Seek The Golden Path"
- "..."
- "Sounds kinda silly."

## Miscellaneous

Mailbox:

- "Empty..."

Signpost to the left of the central fourth set of stairs:

- "← This way to 'Town'  
(Ruins of Old Village)"

Weather vane:

- "We Eas Sou Nor  
Nor Sou Eas We  
Nor Eas Sou We  
Nor Sou Eas We"

Forbidden Pass signpost:

- "[skull] DANGER [skull]  
No passage."

The Secret Gathering Place altar initially reads:

- "No souls returned..."

Western Bell:

- "To ring a bell, you strike a bell."

Sealed Temple statue plaque:

- "With 3 keys we sealed The Heir.  
A key is no mere toy.  
Seekers of ruin, leave here."



Sealed Temple red key pedestal:

- ""Questagon [red key] goes here""

Sealed Temple green key pedestal:

- ""Questagon [green key] goes here""

Sealed Temple blue key pedestal:

- ""Questagon [blue key] goes here""

Signpost west of the West Furnace:

- "This way to West Garden"

Signpost in Hourglass room:

- "!! [skull] Danger [skull] ! !"

# Trivia

- From the beach of Ruin Seeker's Arrival, then by using the Hero's Laurels to dash right onto the rubble and up behind the wall, there is an obscured Trunic "Egg!" prompt.

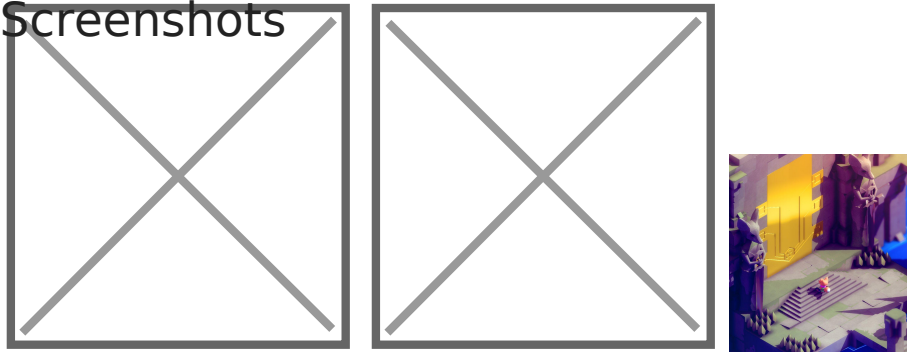
# Nomenclature

Language	Name
English	Overworld
Arabic	سيئيرلر العالم
Bulgarian	Надземния свят
Canadian French	Contrées sauvages
Czech	Nadsvětí
Danish	Oververden
German	Oberwelt
Greek	Υπέρκοσμος
Spanish	Mundo superior
Finnish	Ylämaailma
French	Contrées sauvages

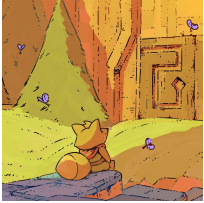
Language	Name
Hungarian	Felvilág
Italian	Oltremondo
Japanese	上界
Korean	상계 上界
LATAM Spanish	Mundo superior
Dutch	Bovenwereld
Norwegian	Oververden
Polish	Nadświat
Portuguese	Superfície
Brazilian Portuguese	Superfície
Romanian	Lumea de deasupra
Russian	Верхний мир
Simplified Chinese	上界
Swedish	Övervärlden
Traditional Chinese	上界
Turkish	Yerüstü
Ukrainian	Надзем'я

# Gallery

## Screenshots



## Artwork



# Concept Artwork



---

Revision #76  
Created 7 February 2025 02:24:56 by HyliaAngel  
Updated 9 March 2025 22:08:27 by HyliaAngel